

Thank you for purchasing an Outdoor Revolution product.
This product will give years of satisfactory service if basic
instructions are followed. Our products are designed for
durability and ease of erection.



WWW.OUTDOOR-REVOLUTION.COM

UNIT 1 BRICK PARK
BRETFIELD COURT
BRETTON STREET INDUSTRIAL ESTATE
DEWSBURY
WEST YORKSHIRE
WF12 9BY

In the interest of continuous development and improvements by Outdoor Revolution; some products or specifications may vary slightly from the photographs and information provided in this instruction manual.
Dimensions and weights are approximate and intended as guidelines only.



**OUTDOOR
REVOLUTION**
WWW.OUTDOOR-REVOLUTION.COM

AIREDALE 6.0S

INSTRUCTIONS & CARE MANUAL



**OUTDOOR
REVOLUTION**
WWW.OUTDOOR-REVOLUTION.COM

IMPORTANT: PLEASE CHECK YOUR EQUIPMENT

1 X FLYSHEET (OR OUTER)
5 X OXYGEN AIR FRAME TUBES
1 X SIX BERTH INNER TENT
1 X DUAL ACTION HAND PUMP
1 X BAG OF GROUND PEGS
1 X REPAIR KIT
1 X HOLDALL
GUYLINES



We highly recommend that you insure your family tent against storm damage, or accidental damage, as the warranty does not cover such eventualities. The manufacturer **IS NOT** liable for any damage caused to this family tent, or its contents, due to misuse, incorrect pitching, or severe weather conditions; full warranty details are on the rear of this booklet.

THE GUARANTEE (CONTINUED)...

registered in accordance with the manufacturer's registration process.

OR reserves the right to appoint its own representative to inspect the awning/tent, tube or associated components, prior to any repair or replacement of part(s) covered.

Replacement INTELLIGENT FRAMES under the lifetime guarantee will be despatched to any UK mainland address free of Charge. Shipping charges covering the cost to despatch the INTELLIGENT FRAMES to destinations outside of the UK mainland will be applied and payable before being despatched. (**Please note this service may take over 3 days).

Covered components of the Lifetime Warranty

The Lifetime Warranty is valid only for the following components of the awning or tent::

The air tube containing the IF (Intelligent Frame) only

Maintenance repairs and general wear and tear are not covered by the Lifetime Guarantee.

1.3. Customer duties to retain warranty

Online Registration of product is required to validate the Lifetime Warranty; the warranty automatically ceases on re-sale of the product.

The recommended pressure is of 4PSI; as soon as air is heard releasing from the IF valve, inflation must cease.

The warranty does not cover deliberate defacement, human error, misuse or accidental damage; the Lifetime Warranty is a guarantee against manufacturing flaws, solely of the tube.

1.4. Data protection

The activation and validation of the Lifetime Warranty requires OR to maintain personal data of the owner. Blue Diamond Products Limited and Outdoor Revolution will not pass your data onto any third parties and we will not use your data for any marketing purposes without your consent.

LIFETIME GUARANTEE

This warranty provided by the manufacturer does not adversely affect the statutory rights of the purchaser against the seller and gives remedies in addition to those against the seller under the contract of sale. Claims by the purchaser, in particular for a defect on an Intelligent Frame (IF), against the selling Outdoor Revolution distributor remain unaffected by the warranty.

Outdoor Revolution (hereinafter called "OR"), a subsidiary of Blue Diamond Products Ltd group, and its successors in title, warrants for awnings, or tents using IF technology, of their manufacture:

12 months, without limitation, a warranty against all manufacturing defects of the entire product.

1. LIFETIME WARRANTY OF THE INTELLIGENT FRAME FOR THE FIRST REGISTERED OWNER

1.1. Duration of Warranty

OR undertakes that each new awning/tent supplied thereon by OR as original equipment will be free from defect in material or workmanship according to the state of the art under normal use and service for the Lifetime of the awning/tent. The warranty is valid for the first registered owner of the awning/tent, who bought the product at an OR Authorised Retailer.

The warranty starts on the date of first registration, THIS MUST BE WITHIN 14 DAYS OF PURCHASE.

1.2. Coverage of the Lifetime Warranty

The warranty applies to free of charge repair, or replacement of the IF tube by OR i.e. OR's obligations under this warranty being limited to repairing or replacing at its option any parts or Tube by either OR, or an OR Authorised Repairer. The repair or replacement of defective parts under this undertaking will be made by the Authorised Repairer to whom the awning is returned, free of charge to the customer.

For the parts fitted during a repair, until expiry of the warranty limitation according to Paragraph 1, the same warranty is given as for the awning, tent, frame or associated parts i.e. the warranty is not extended by the repair or replacement of parts even for the parts rectified or replaced. Replaced parts become the property of OR.

Lifetime Warranty cover is dependent upon confirmation that the awning/tent has been

IMPORTANT INFORMATION

- ◆ Please do not leave for your holiday without fully erecting and checking that you have all the listed contents for your tent. If you are missing anything, then please contact your retailer immediately before use.
- ◆ Please note that man-made fabrics are prone to condensation, when the warm air and moisture within the tent, comes into contact with the colder air on the outer material. This is a perfectly natural occurrence and should not be confused with leaking. Please ensure that all ventilation points remain open, whenever possible, to help combat condensation.
- ◆ We suggest that you pitch your tent for some period before use, enabling it to undergo the 'weathering' process. Weathering sometimes requires a few uses of the tent, before it becomes fully effective. Seam sealant can be used to solve any persistent weeps; this process is completely natural. 'Weathering' is the process of allowing your tent to become soaked, then completely dry, approximately two to three times, in order to reinforce the waterproofing of the seams/stitching on the fabric.
- ◆ Please ensure that you site the tent on clear level ground before erecting, with no sharp objects beneath and zips fully enclosed. We suggest placing a groundsheet underneath the tent to keep it dry/clean.
- ◆ We recommend conducting a trial run of your tent to familiarise yourself with the assembly and usability of the tent. If you have any issues in relation to pitching your tent, then please contact your dealer for assistance, before going on holiday.
- ◆ Please note that this model is designed for 'touring' use and not seasonal pitch.
- ◆ Always dry/air the tent after use, before packing away, to prevent mildew or mould from developing.
- ◆ Any dirt or stains can be removed by brushing, or gently washing, using warm water. DO NOT use detergents, as this will destroy the waterproofing of the materials.
- ◆ DO NOT cook or smoke inside this tent; despite the outer fabric being flame-retardant, it will still melt.
- ◆ In the event of damage; please contact your retailer. If, for whatever reason, you are unable to contact them, then please email: cs@blue-diamond-products.co.uk and our dedicated customer service team will be happy to assist you.
- ◆ Please avoid using this tent in temperatures below freezing, as this can result in cracking of the Oxygen Air Frame.
- ◆ Always store your family tent flat, never on the side of the bag, in a cool/dry area, to avoid any detrimental impact on the Oxygen Air Frame.

OPTIONAL ACCESSORIES

- ◆ Stone Protection Footprint - A heavy duty groundsheet underlay, with a 10,000mm hydrostatic head, designed to safeguard against sharp rocks or hard ground.
- ◆ Lounge Liner - A water repellent internal roof liner, which toggles in to the roof, in order to maintain a comfortable internal temperature and grant further water resistance.
- ◆ Snugrug - A thermal backed rug-style camping carpet, which covers your internal living space, for more comfortable footing.
- ◆ Airedale 6.0S E-Canopy — A coordinating front canopy, which zips onto the front of this model, to create a spacious porch extension, with complete protection against the elements.
- ◆ Two Berth Inner Tent - A dark roofed micro-polyester sleeping inner tent, which can be toggled in to the side annexe or internal living space, to comfortably sleep two adults or house a double air mattress.
- ◆ Jet Stream Electric Pump - An effortless high pressure internal 12V electric air pump, designed for the rapid inflation of your family tent.
- ◆ Lumi-Link Tube Light Kit - A triple remote controlled dimmable roof strip light kit, which enable you to maintain a cosy evening ambience.
- ◆ Storm Straps— A pair of heavy duty adjustable tensioning straps, designed to maximize stability of your family tent in adverse weather conditions.

⇒ Visit www.outdoor-revolution.com for more information.

LIFETIME GUARANTEE

The Oxygen Air Frame Tubes come complete with an exclusive **LIFETIME GUARANTEE**.

You must register for the **LIFETIME GUARANTEE** on the Outdoor Revolution website within **fourteen days** of the purchase to **validate** the warranty.

Terms and Conditions apply. Find the Terms & Conditions on our website!

- Damage caused by incorrect maintenance of the product.
- Flaws in the fabric caused by excessive use.
- Imperfections and pulls in mesh doors due to wear and tear.
- Water ingress through fabric as a result of accelerated UV degradation due to long term pitch .
- Water ingress through seams caused by excessive abrasion of seams or taped seam.
- Broken zips caused by over tensioning, forcing or snagging.
- Over tensioned/stretched seams coming apart.
- Buckles subjected to undue force or abrasion.
- Lost/popped out eyelets.
- Broken holdalls.
- Pole breakages or tube punctures (where applicable).
- Collateral damage from a pole breakage.
- Condensation, (a natural occurrence, exacerbated by insufficient ventilation opening).
- Consequential damage/loss to property/belongings (either inside or outside of the product) or shortening of holidays.

Outdoor Revolution work very closely with our retail partners to manage all warranty repairs/issues:

Please contact your retailer immediately (even if purchased online) if you feel your Outdoor Revolution product has a genuine warranty issue. The retailer, in turn will raise the issue with ourselves and we will action; with the retailer, according to the nature of the claim.

Returning Products

Please ensure the product is clean and dry and as close to its original condition as possible before sending back for checking. Wet or dirty products will not be accepted back for checking/warranty claims.

It is important to note that the Sales Contract between yourself and the retailer you purchased the Outdoor Revolution product from, remains valid throughout any warranty claim and your statutory rights are not affected.

OUTDOOR REVOLUTION GUARANTEE

Outdoor Revolution products are designed and produced to the very highest of manufacturing standards, using the best quality fabrics or components available for each specific model. Rigorous quality control of finished products is in place.

All manufactured products are:

- Quality controlled to be free from minor defects.
- Fit for the purpose that they are intended for.
- Manufactured to a satisfactory quality.

It is important that correct care is taken when opening, erecting, using, and just as importantly, packing away the product. Following these rules will keep your product in reliable working condition for many years. Failure to adhere to these simple guideline may cause unnecessary damage to the product (see formal instructions for handling/erection tips). A repair kit is included with each of our products to help resolve any minor issues.

THE WARRANTY

The Outdoor Revolution Warranty lasts for twelve months from the original date of purchase; please keep all receipts or copies of any relevant transaction to substantiate the purchase date. This warranty only covers the workmanship, fabric and components. Any faults found within six months of purchase will be investigated by Outdoor Revolution. Faults found outside of the initial six months of purchase will need to be proven by you, the purchaser, in line with current consumer legislation, after the short term right to reject has concluded. **Please note that this warranty requires registration on our website.**

Retailer will not refund a purchase if no fault is found.

The manufacturers warranty does not cover the following:-

- General wear and tear over extended periods of use or, seasonal pitching of the product.
- Accelerated UV damage caused by excessive, long term sun exposure.
- Accidental damage caused by but not exclusive to, human, animal or weather.

PLEASE READ THE INSTRUCTIONS CAREFULLY

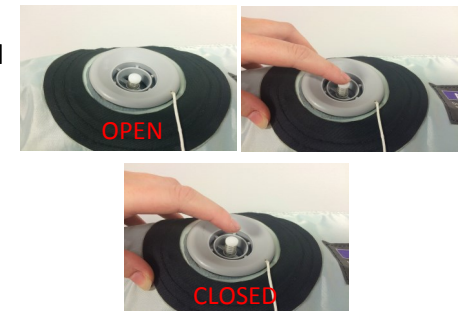
TIP: Refer to the photographs below to help when pitching your **Airedale 6.0S**.

1. Spread the flysheet on the ground where you want to pitch it.



2. Peg down the four corners of the tent down using the adjustable pegging points. This keeps the tent in position whilst you inflate it; you may need to readjust them afterwards.

3. Locate the first 'Dynamic Speed Valve' and ensure the valve is **closed**, before attaching the pump. The valve is closed when the button is pressed out. There is an additional valve at the other end of the tube; please ensure that this is also closed.



4. Insert the pump nozzle into the Dynamic Speed Valve and begin to carefully inflate, ensuring that no part of the fabric is caught anywhere.

5. Inflate the Oxygen Air Frame, until you can give it a 'good squeeze'. The tube requires room inside for air to expand. Should you keep inflating, however, the pressure relief valve will release any excess air above 6PSI.



6. Replace the cap on the valve, before covering it using the Velcro sleeve to maintain a tidier external aesthetic. Repeat steps #3 to #6 with the remaining four tubes.

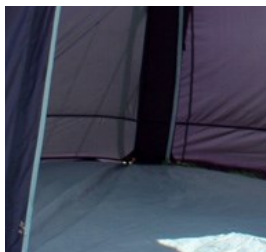


7. Peg out the front of the tent, using any adjustable pegging straps to tension the tent as much as you desire. Please make sure that you do not over tension the fabric.



8. Secure any remaining pegging points, guylines, or storm straps, starting from one corner, before working your way around the family tent.

9. Place the separate groundsheet in the designated porch space, before securing any eyelets as tautly as possible, using the included steel ground pegs.



TROUBLE SHOOTING

<u>PROBLEM</u>	<u>REASON</u>	<u>SOLUTION</u>
The Oxygen Air Frame is deflating after removing the pump.	The 'Dynamic Speed Valve' button hasn't been pressed back out.	Press the quick-release button back out to shut the valve.
The tent is leaking water.	The tent requires 'Weathering' two to three times before it fully seals itself, so you may experience some weeping. This could also be condensation; an inevitable occurrence.	Allow the tent to get soaked, then dry, two to three times. Open all ventilation points to optimise airflow and reduce condensation.
Bowing and twisting of the tubes.	The tubes may twist inside the sleeves, particularly when packing away, so next time the tube bows...	Unzip the sleeve whilst the tube is deflated and reposition the tube.

IN THE EVENT OF A PUNCTURE

If you have a small puncture in your 'Oxygen Air Frame Tube', you can easily repair it using the standard puncture repair kit.

- ◆ To remove the air frame tube, deflate the tube, then unzip the two protective sleeves over the tube and simply pull it out. Do not unzip the sleeves whilst the tube is inflated.
- ◆ Locate and repair the puncture on the air frame bladder.
- ◆ Place the air tube back into the sleeves, in the correct place, with the valves in their respective sockets. Make sure that the tube is not twisted.
- ◆ Zip the two sleeves back up fully.
- ◆ Inflate the 'Oxygen Air Frame Tube' again, ensuring that the puncture has now been repaired.
- ◆ If this process doesn't work, you may need to purchase a new bladder.

****Spare air-frame bladders can be purchased to replace damaged ones. Visit the [spares](http://www.outdoor-revolution.com) section at: www.outdoor-revolution.com or contact us on 01924 455 313.**

****Awnings & Tents will not be replaced because of damaged bladders****

PACKING AWAY YOUR FAMILY TENT

- ◆ Zip up any windows/doors before deflating.
- ◆ Unpeg all guylines, storm straps and most of the pegs around the tent, leaving only four corners pegged out.
- ◆ Open each 'Dynamic Speed Valve' in turn and push in the quick release button; leave this button pressed in.
- ◆ Unpeg each of the four corners.



Allow the family tent to collapse on itself and push as much air out of the tubes/canvas as possible.

Fold the family tent on itself vertically to form a rectangular shape.



Fold the family tent on itself again to create a streamlined 'sausage' shape. Measure the width of the folded model against the bag to ensure that it will fit inside. Begin rolling the model, pushing out any air as you roll.

Rotate the rolled tent onto the bag, pull the sides up around it, then zip up the bag.



10. Please lay the inner tent in the designated space, with the door facing the front. Match the coloured elastic to the corresponding coloured loops and work your way around, clipping the inner tent into place.



11. Place sleeping equipment inside the inner tent.

11. Please ensure that you secure *all available* guylines, pegging points and storm straps during adverse weather conditions for maximum stability.



WARNING: Never unzip the zips on the protective sleeves whilst the 'Oxygen Air Frame Tubes' are inflated. This will result in the tube bursting/ballooning out of the sleeve, causing damage to the tube and sleeve; this is NOT covered under the warranty!